

**Optimize equipment investments by sharing  
network monitoring and testing devices electronically**



**INTELLAPATCH® Series 3000**  
**The Next Generation of Device Connectivity**

# INTELLAPATCH® Series 3000

INTELLAPATCH switches enable companies to optimize use of network and lab resources by providing a method for remotely sharing expensive monitoring, intrusion detection and testing devices.

## Uptime and fast problem resolution

are top priorities in enterprise networks today, especially for companies that depend on their IT infrastructure for revenue generation and customer service. The same is true in network equipment manufacturing environments where the ability to comprehensively test network devices is a critical time-to-market issue.

With our “wire once” technology, users set connections a single time and then make changes electronically, avoiding time-consuming and error-prone manual patching. Two clicks in the embedded web GUI enable users to connect any device to another – either across the room or across the globe – without leaving their desks.



## **INTELLAPATCH ACI-3144**

*featuring 144 ports of non-blocking, any-to-any connectivity in a 4U chassis*

## F E A T U R E S

- High-availability controllers with automatic failover
- Supports faster data rates – 10 Gbps Ethernet & 8 Gbps Fibre Channel
- High-density blades – up to 36 ports each in 1U
- Programmable front panel LCD for switch set-up and diagnostics
- Hot-swappable power supplies, blades, transceivers
- Hitless firmware upgrades
- Non-blocking, any-to-any switching architecture

# Purchasing dedicated monitoring devices for hundreds of points on a network is impractical and cost prohibitive, which explains why INTELLAPATCH® is such a compelling solution.

## FOUR INTUITIVE INTERFACES

**WEBX** | WEBX is the embedded web interface included on all INTELLAPATCH switches. With no software to install, users can immediately begin configuring and managing port connections in an intuitive environment via a two-click interface.

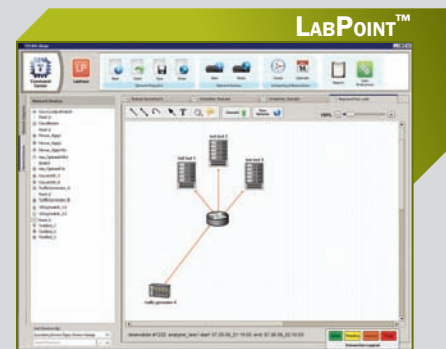
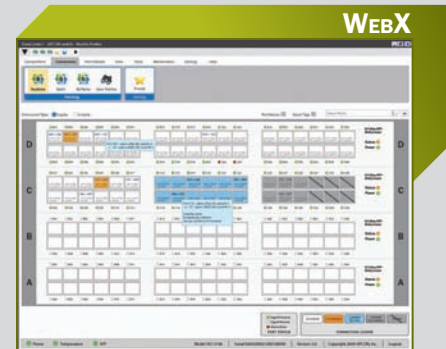
**NETVis** | An update of APCON's MONITOR program, NETVis provides a simplified solution for electronically sharing network monitoring devices. Embedded in the WEBX interface, NETVis enables users to connect monitoring devices to any point on the network in two clicks – resulting in full network visibility.

**Embedded CLI (API)** | The CLI allows users to enter commands through a Telnet program that will be executed as if they were entered directly on the switch. Ideal for scripting and automation, the CLI also provides an interactive mode that guides users through sub-commands for setting system parameters.

**TITAN** | TITAN is the ideal software tool for enabling users to manage multiple INTELLAPATCH switches. This architecture scales to support complex environments with thousands of ports and hundreds of devices, yet it also allows remote, multi-user access to improve efficiency. TITAN offers two new modules for effective network connectivity management:

**ENTERPOINT** Designed for use in enterprise network monitoring programs, ENTERPOINT enables users to intuitively create and manage monitoring sessions.

**LABPOINT** Designed for use in test lab environments, LABPOINT makes it possible for technicians to build and store complex test topologies, and recall and run them on a scheduled basis.



# INTELLAPATCH® Series 3000

The Next Generation of Device Connectivity & Switching Solutions from APCON

## APPLICATIONS

**Test Lab Environments** | Controls and automates complex test configurations at multiple data rates and protocols.

**Enterprise Networks** | Enables electronic sharing, distribution and remote management of monitoring equipment.

**Network Security** | Control access to any area of a network by allowing locations to be electronically isolated or disconnected.

MODEL	DESCRIPTION
ACI-3144 . . . . .	INTELLAPATCH Series 3000 144-Port Switch Chassis
ACI-3072 . . . . .	INTELLAPATCH Series 3000 72-Port Switch Chassis
ACI-3010-E09-3 . . . . .	9-Port 10 Gigabit Ethernet Blade – available with Single-mode or Multimode XFP Transceivers
ACI-3010-E36-2 . . . . .	36-Port Ethernet Multi-rate Blade – 10/100/1000 Mbps, Copper (RJ-45)
ACI-3010-E36-4 . . . . .	36-Port Gigabit Fiber Ethernet Blade – available with 1.25 Gbps SFP Single-mode or Multimode Transceivers
ACI-3010-F36-8 . . . . .	36-Port 8 Gigabit Fibre Channel Blade – 1/2/4/8 Gbps for each port, available with SFP+ Multimode Transceivers

F E A T U R E S
○ Up to 36-port blade design with 1U blade height
○ Redundant controller cards with automatic failover
○ Programmable front panel LCD for switch setup and diagnostics
○ Hot-swappable power supplies, blades, transceivers
○ Field-replaceable fans
○ Point-to-point (full duplex or simplex), multicast (1 to n), and loop topologies
○ Non-blocking, any-to-any switching architecture
○ Signal regeneration on all ports
○ Two LAN ports and one serial port for remote software execution
○ Available in 144-, 72- and 36-port configurations

