

## Providing Complete Application Visibility

Rebasoft Application Auditor is a next-generation system designed to give organizations unrivalled visibility into who is using applications across the network.

Application Auditor is different in that it is a single application that can make use of multiple data sources for identifying application usage. It is not just a “NetFlow tool” or “log analytics tool”. Application Auditor combines the best elements of these data-sources into a low cost package with rich reporting and integration possibilities.

See what your users are doing:

- Which URL's are being visited?
- What countries is traffic coming to and from?
- What are my busiest links?

### Key Benefits

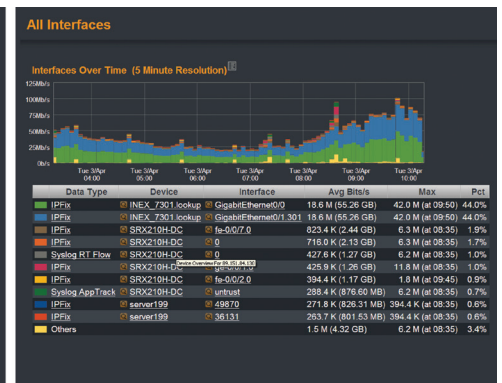
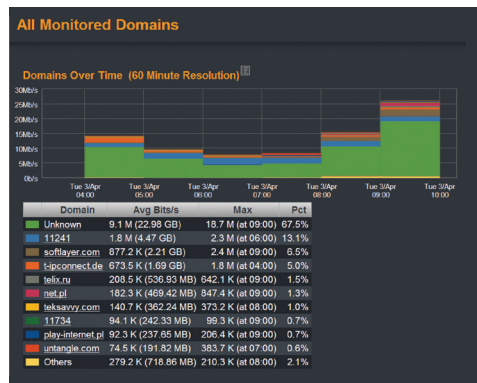
**Application usage breadth**  
Combine multiple sources of data to ensure you get the visibility of all the application use in your network - from a single system

**Flexible reports**  
Build and view the reports you need - whether forensic analysis for troubleshooting or system level reports for inclusion in management reporting

**Real-world views**  
Application Auditor allows users to select the networks to be monitored and combine them into sites and locations. Now reports can easily be built to show traffic between floors, campus buildings or even countries

**Fast deployment**  
Software only (no probes/agents to install or configure) Application Auditor can be installed and commissioned in minutes. Simply point the exports of syslog at the system and start reporting

**Data storage**  
Keep data as long as is required - not artificially set by developers



Application Auditor collects information without the need to deploy hardware probes. Probe-less environments typically mean much greater coverage of the network is possible and much lower cost of deployment.

Application Auditor's flexible reporting can be used for a variety of purposes within an organization—such as security, problem management, change control and more:

### Security

- Are users in compliance with acceptable use policies?
- Is there malware on the network and who's affected
- User access anomaly detection
- Hackers / Denial of Service

### Problem solving

- Identify traffic flows on the network and relate to userID\*
- Easily follow sessions from users through to destination
- Analyze application traffic patterns between sites and locations
- Drill down and forensically analyse application usage to identify issues

### Capacity planning

- Who and what applications are consuming network bandwidth

\* Requires Auditor Core

## System Requirements

System requirements vary depending on the number of sources monitored. The following requirements are a guideline:

- Dual core Intel Xeon or AMD similar processor
- 4GB RAM, although performance will benefit from increased RAM
- 2 x 500 GB SAS disk (or greater depending on network size and period of storage)
- Windows 2003/2008 server or Linux (VMware supported)
- Internet Explorer V8 or later, Mozilla V3 or later (JavaScript must be enabled in the browser)

## Key Features

- Flexible reports for application usage:
  - From Subnets to individual IP addresses
  - Full flow forensic reports
- Multiple datasources in one system:
  - IPFIX, NetFlow, jFlow, sFlow
  - Firewall traffic logs
  - Proxy server access logs (syslog and WELF format)
  - Juniper Networks AppSecure logs
- Web based application
- Easy to use
  - High performance
  - Scalable
- Fast deployment, probe-less

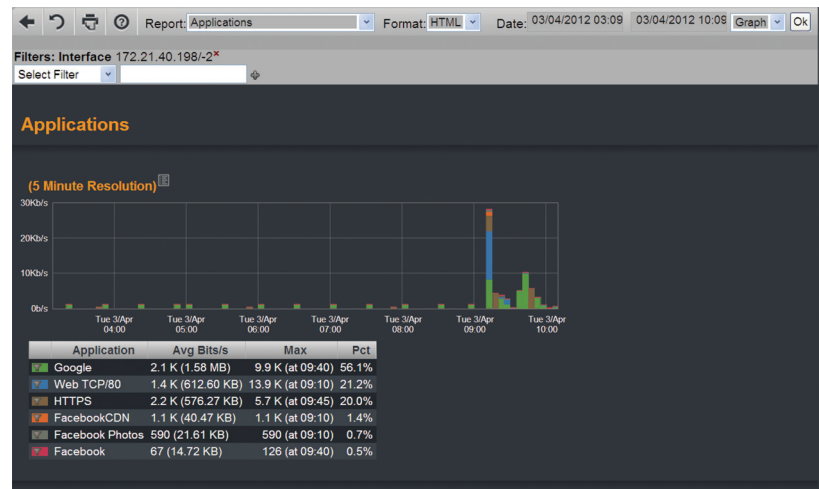
## Rebasoft

21 London Road, Twyford, Reading  
United Kingdom RG10 9EH

Tel : +44 (0) 800 799 7322  
eMail : info@rebasoft.net

Application Auditor, in a single environment, can meet the needs of management to understand what is happening overall - and technical staff - to drill down to an individual session for security or troubleshooting purposes.

A web based application, Application Auditor is simple to install, fast to set up and easy to use.



## How does it work?

Application Auditor sits on a central web server. It receives data from remote devices (routers, switches, firewalls or proxies). Once data is being received, reports are available in as little as 5 minutes.

## Is it for my organization?

If you have a firewall, proxy or device capable of exporting netflow/sflow, Application Auditor could be for you.

- Have little or no visibility on network traffic
- Want to verify firewall security
- Want to save money by consolidating multiple tools

## About Rebasoft

Rebasoft delivers next-generation software to enable network and security operations to become more effective. Our company was built by network and security engineers who not only know how to run and secure networks, but also see the limitations in today's systems that many of our clients use.

Our aim is to continuously develop our products based on best practice and customer need. We aim to deliver out-of-the-box functionality that delivers real benefits. Fast. This means delivering great value, easy-to-use software.

The result, we hope, will change the way people work, delivering significant savings to organisations of all types and sizes.